

Hüzzâm şarkı

Semaî usûlü

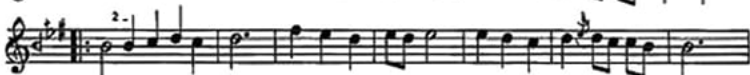
Bir selâm göndersen seher yeliyle

SallihBera.Com

Beste ve güfte: Kâsım İnaltekin

♩ = 132

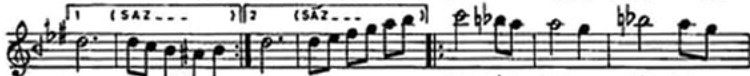
(SAZ---)



1. BİR SE. LÂM GÖN. DER. SEN SE. HER YE. LİY. GÜ. LE
2. RÜ. YÂ. LAR HER ZA. MAM SE. NİN. LE GÜ. ZEL



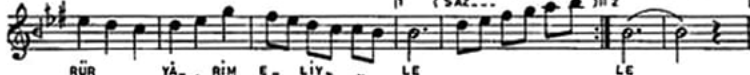
FER. YÂD Ü. LAR ÂH E. DEN BÜL. BÜL Dİ. LİY.
MÜL. YÂ. LAR GÜL KO. KAN TE. NİN. LE GÜ.



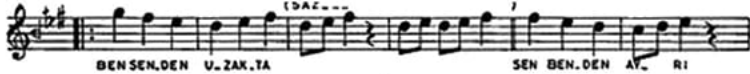
LE ZEL LE ZEL KAL. BİM. DE SÖN. ME.
BİR GÜ. NÜM GEÇ. ME.



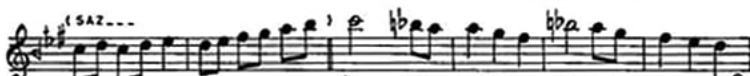
YEN ASK A. TE. Sİ. Nİ Dİ. LER. SE SÖN. ÖÜ.
Dİ SE. NİN. LE GÜ ZEL. SUN. DU. GUN ZEM. ROL.



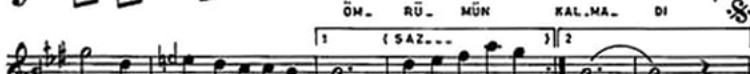
RÜR YÂ. RİM E. LİY. LE LE
SA E. LİN. LE GÜ. ZEL ZEL



BEN SEN. DEN U. ZAK. TA SEN BEN. DEN AV. RI



ÖM. RÜ. MÜN KAL. MA. Dİ



NEŞ. E Sİ GAY. RI RI [SON]