

Nihavend şarkı

Gönül bahçemdeki yağmur tânesi

Semaî usûlü

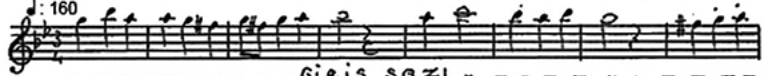
3'25"

SalihBora.Com

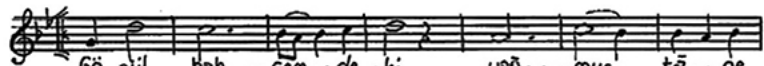
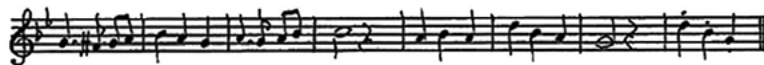
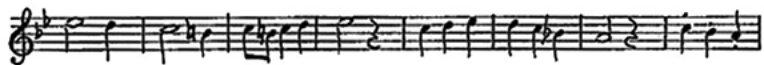
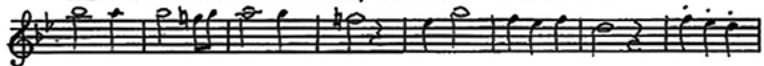
Beste: Alâeddin Şensoy

Güfte: Oktay Zerrin

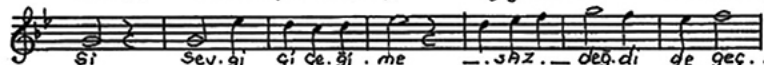
♩ : 160



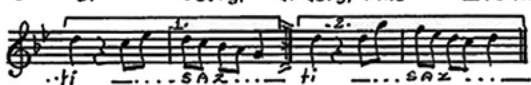
----- GİRİŞ SAZI -----



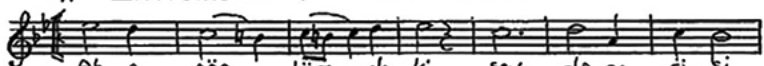
Gö.nül bah ... çem.. de.. ki yağ... mur tā.. ne..



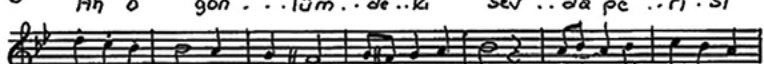
Si Sev.gi Gi Ge.ği . me ... SAZ... değ.di de geç..



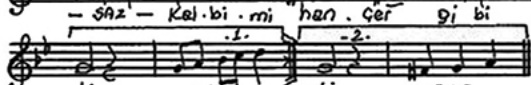
..ti SAZ..... ti SAZ.....



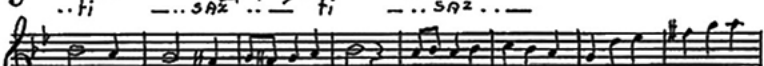
Ah o gön... lüm.. de.. ki sev .. da pe .. ri . si



- SAZ - Kal.bi . mi han . Ger gi bi del.. di de geç..



..ti ... SAZ ... ti ... SAZ ...



A R A S A Z I

Hü.zün ..lü gö..rün...dü ba.na u.fuk...

..lar ...GAZ... Mâ.zi ..ye ka..rıř...tı

hep _ mut.lu ..luk ...lar -SAZ- lar

SalihBora.Com

Gönül bahçemdeki yağmur tânesi
Sevgi çiçeğime değdi de geçti
Ah o gönlümdeki sevda perisi
Kalbimi hançerle deldi de geçti

Hüzünlü göründü bana ufuklar
Mâziye kariřtı hep mutluluklar
Söyle kimi sarsın bu boş kucaklar
Benim sevmek yařım geldi de geçti